

B25WD-DCH

PN25

DN50~300



SPECIFICATION

FOR BS 5150 PN25 FLANGE MOUNTING

FACE TO FACE DIMENSION TO ISO 5752-82

PRESSURE / TEMPERATURE RATINGS

Working Pressure	25 bar
Testing Pressure	Shell : 37.5 bar Seat : 27.5 bar
Working Temperature	-10 °C to 120 °C (EPDM Seat) -10 °C to 80 °C (NBR Seat)
Suitable Media	Water, Oil & Gas

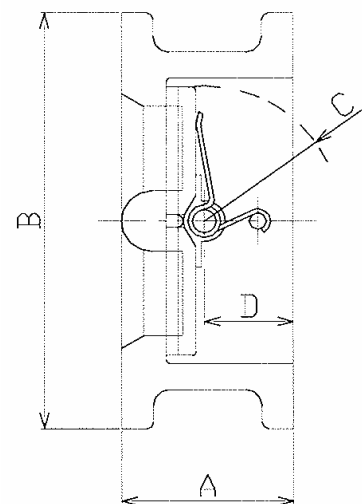
MATERIALS

Part	Material	BS
Body	Ductile Iron	Gr.420/12
Disc	Ductile Iron	Gr.420/12
	Aluminum Bronze	1400 AB2
	Stainless Steel 304	304 C15
	Stainless Steel 316	316 C16
Spring	Stainless Steel 316	316 S16
Shaft	Stainless Steel 316	316 S16
Seat Ring	EPDM	
	NBR	

DIMENSIONS

Size mm	A mm	B mm	C mm	D mm
50	43	106	29	19
65	46	126	36	20
80	64	141	42	28
100	64	164	53	27
125	70	192	64	30
150	76	220	77	31
200	89	278	102	33
250	114	335	127	50
300	114	394	149	43

*B = Outside diameter for PN25 flange mounting.



Note:

1. Other specifications and flange standards are available upon request.
2. Design and specifications are subject to change without prior notice.